

OVERVIEW

The 5495 Forward Mount Probe Holder provides a convenient way to directly connect forward mount proximity probes on a machine case. The probe is threaded inside the center of the holder, which is securely mounted on the machine case at one end (Process Side). The other end (Connection Side) of the holder can be connected to 5498JB Junction Box or the 8200 conduit elbow or other customer conduit connection. The holder is made of 316 Stainless Steel. The connection thread and process thread of the probe holder can be 3/4" NPT or 1/2" NPT. See order information for options. Note: The 5498JB Junction Box is made of aluminum and accepts the 3/4" NPT connection side.



SPECIFICATIONS

Material: 316 Stainless steel

Temperature Range: -40° to 140°C (-40° to 284°F)

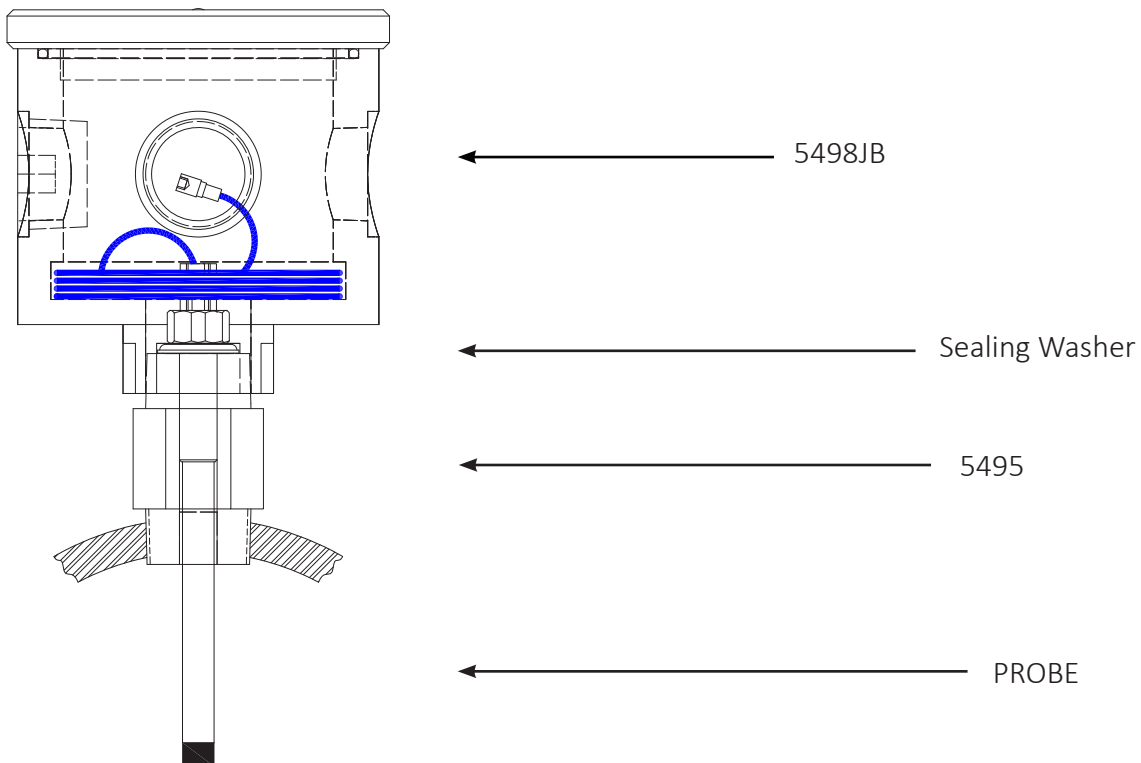
Pressure: 50 psi (3.4 bar) with included sealing washer

Ingression Protection Rating: IP67

Connection and Process Thread: see order information

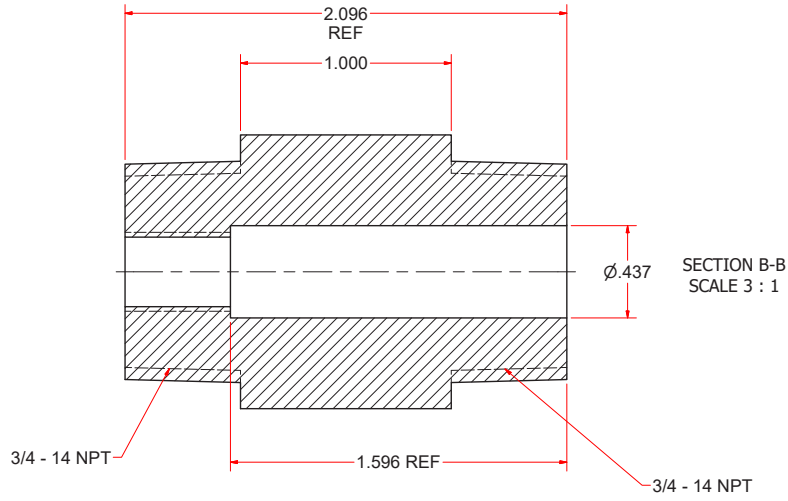
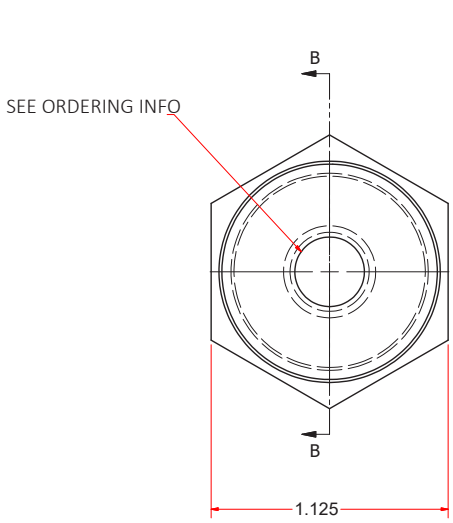
Overall Length: see drawings

ASSEMBLY 5495 (OPTION 001, 002, 005, 006, 007, 008) WITH 5498JB

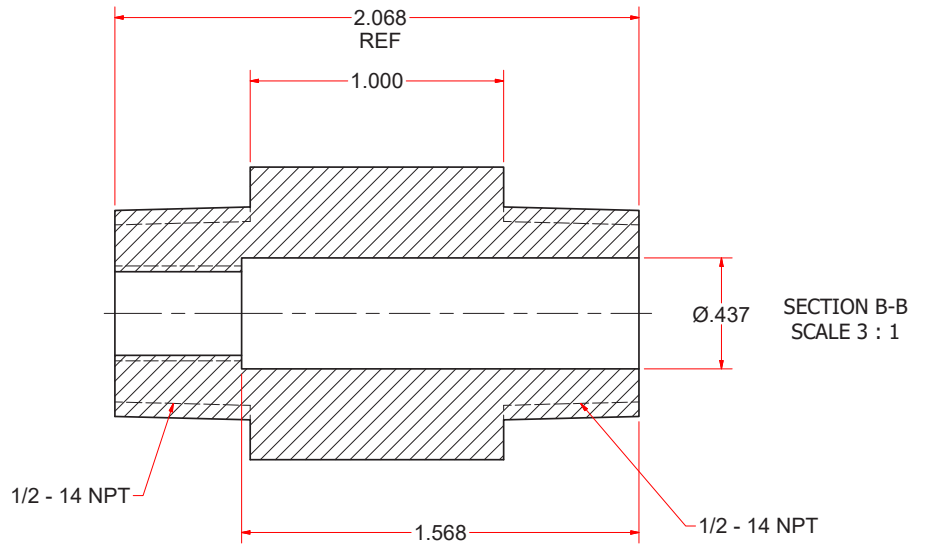
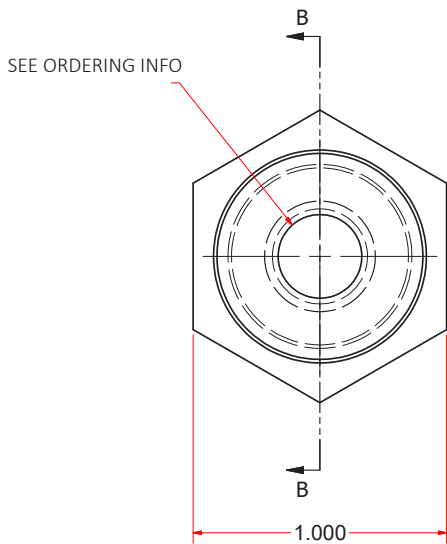


DIMENSIONS

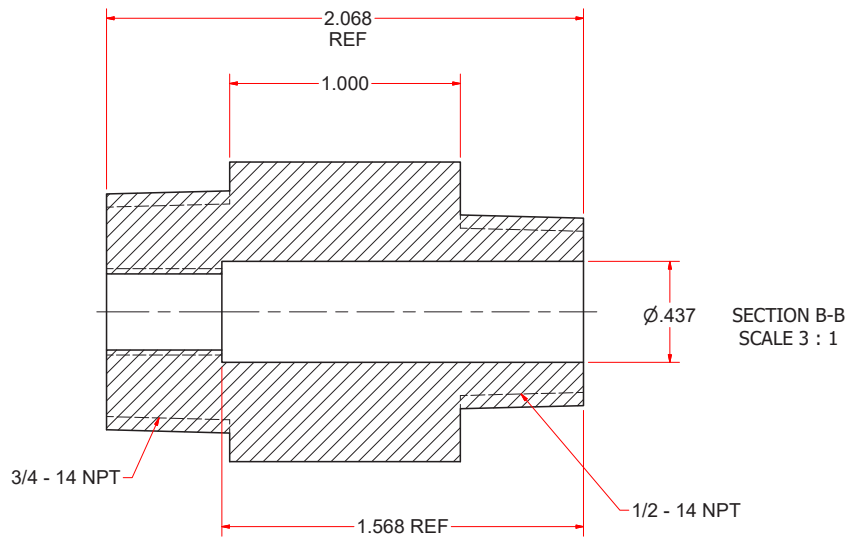
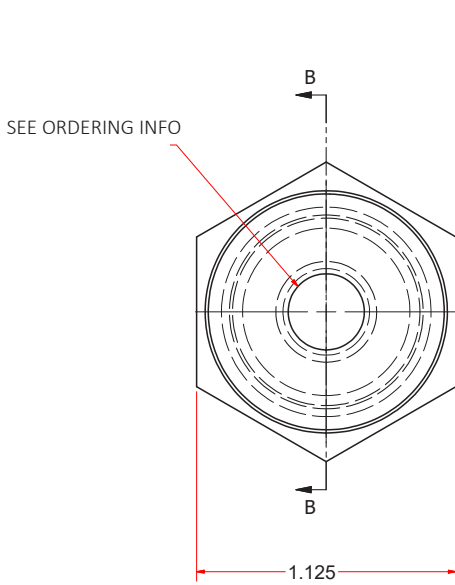
Option 001 and 002



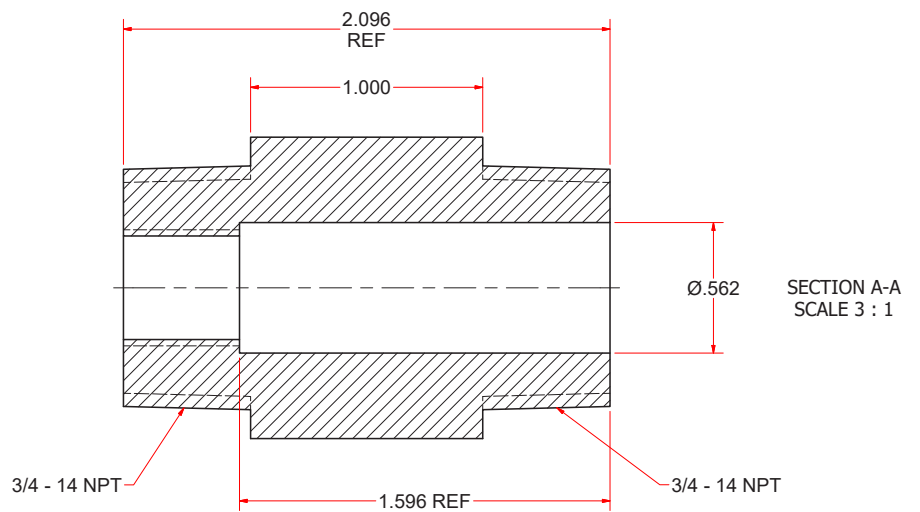
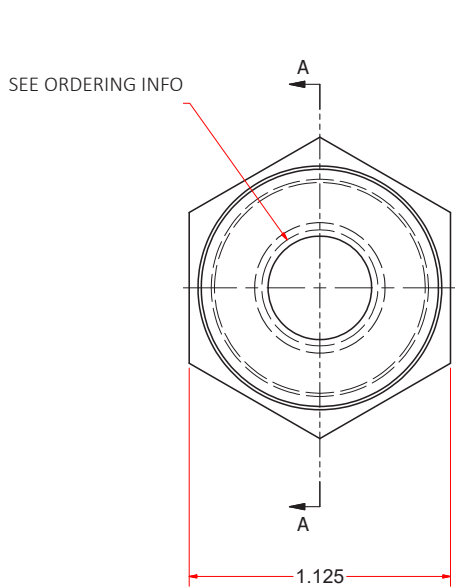
Option 003 and 004



Option 005 and 006



Option 007 and 008



HOW TO ORDER

5495 – AAA		
AAA	DESCRIPTION	Sealing Washer
001	3/4" NPT connection thread, 3/4" NPT process thread, 3/8"-24 probe thread	91201-012
002	3/4" NPT connection thread, 3/4" NPT process thread, M10x1 probe thread	91201-012
003	1/2" NPT connection thread, 1/2" NPT process thread, 3/8"-24 probe thread	91201-012
004	1/2" NPT connection thread, 1/2" NPT process thread, M10x1 probe thread	91201-012
005	3/4" NPT connection thread, 1/2" NPT process thread, 3/8"-24 probe thread	91201-012
006	3/4" NPT connection thread, 1/2" NPT process thread, M10x1 probe thread	91201-012
007	3/4" NPT connection thread, 3/4" NPT process thread, 1/2"-20 probe thread	91201-013
008	3/4" NPT connection thread, 3/4" NPT process thread, M14x1.5 probe thread	91201-007
009	7/8"-14 UNF connection thread, 1/2" NPT process thread, 3/8"-24 probe thread	91201-012
010	3/8"-24 UNF connection thread, 1/2" NPT process thread, 1/4"-28 probe thread	91201-002
011	7/8"-14 UNF connection thread, 3/4" NPT process thread, 3/8"-24 probe thread	91201-012